

# HAL-TEX "RAINSCREEN BREATHERBOARD"

## 3-Ply Semi-Rigid Asphalt Board

### Description

An asphaltic board made up of a button-punched fibreglass sheet coated with high-melt asphalt, then faced on each side with asphalt paper. The punched holes create numerous voids within the coated inner ply through which water vapour can pass. RAINSCREEN BREATHERBOARD is designed for use wherever a semi-rigid water-resistant sheet is required to bridge over spaced supports. Will remain functional under the most adverse of wet/dry conditions within a wall structure.

### Uses and Benefits

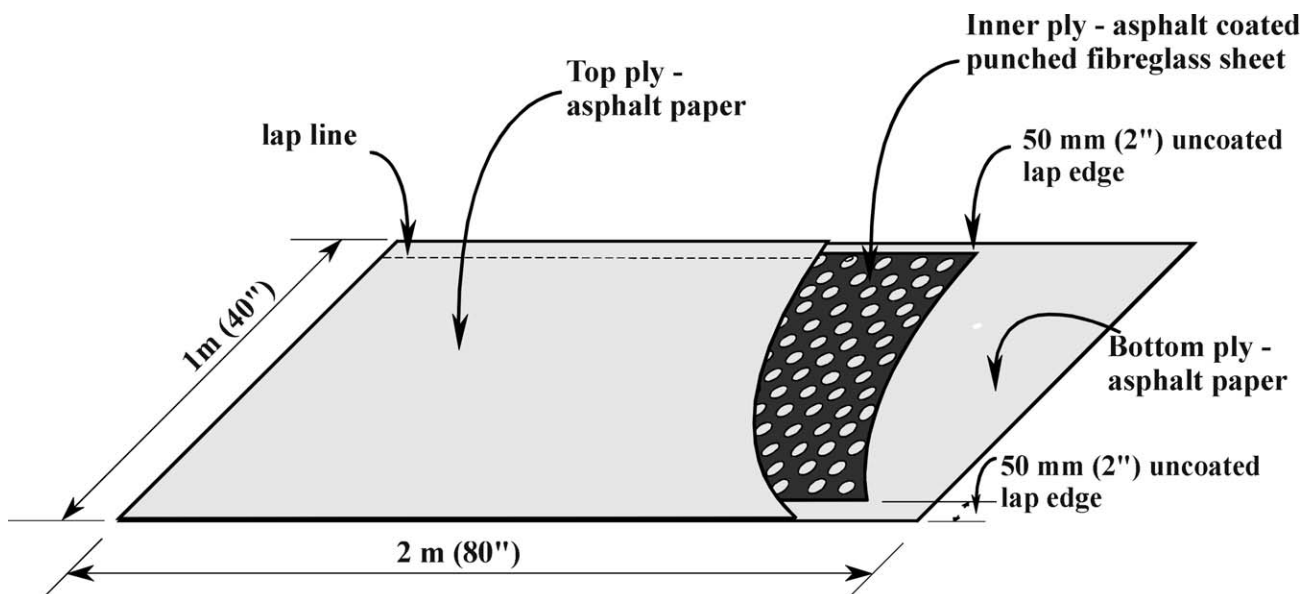
Designed for use on walls over spaced furring strips to create a RAINSCREEN style drainage cavity behind stucco or other types of wall cladding. This product will retain its stiffness across vertically spaced supports when wet, making it ideal for use under stucco, firstly as a short term backer for wet stucco mud, and secondly as a long term permanent moisture barrier. Has exceptional resistance to water penetration, but will allow water vapour to pass through at a controlled rate, to aid in wall drying.

### Technical Data

Width x Length:	1 meter (40") nom. x 2 meter (80") nom.
Thickness:	2.2 mm (3/32") nom.
Tensile Strength:	400 N/25mm (90 lb/linear inch)
Water Vapour Permeance:	300 - 400 ng/Pa. S. m <sup>2</sup> (ASTM E96 Wet Method)
	80 - 120 ng/Pa. S. m <sup>2</sup> (ASTM E96 Dry Method)
Diffusion Water Resistance:	> 10 hrs. (UUB-790a Indicator method with one side wet)

### FIG 1

#### RAINSCREEN BREATHERBOARD

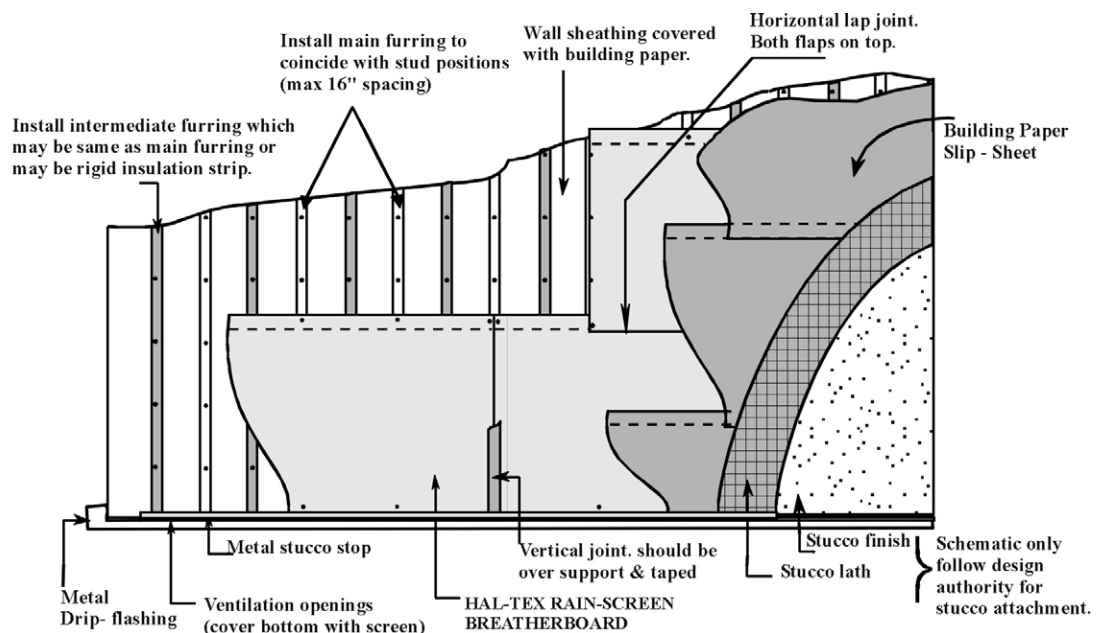


*Continued on next page*

## HAL-TEX RAINSCREEN BREATHERBOARD Cont'd

**Breatherboard Installation Guide** - suggested method of use. May be varied to suit job requirements. This is a guide only, construction details to be provided by the Project Design Authority. For stucco application and attachment follow rules of the appropriate Building Code or project design authority.

**FIG 2**  
**Typical Wall Assembly**



### **NOTES**

1. Install **Rainscreen Breatherboard** in horizontal runs beginning at the bottom of the wall and progressing upwards. Horizontal laps should be made in shingle fashion with both flaps overlapping the lower sheet. Vertical joints should be butted over a furring strip. Seal all vertical joints and tie-ins to window frames with construction tape. Cover all Breatherboard with a slip sheet of 30 minute Building paper to provide a joint-free surface for stucco application. HAL INDUSTRIES reserves the right to inspect all installations at the user's expense.

**WARNING :**Ensure that all horizontal lap joints are made correctly so that a ridge is not formed. A ridge at these joints would result in a horizontal groove in the back of the stucco and become a focal point for stress cracks to occur.

2. Use corrosion protected nails or screws to secure sheets to the main furring strips. Furring which does not coincide with a stud may act as a spacer only and may not be suitable for attachment purposes.
3. Install the specified stucco-lath in the normal manner over-top of the **Rainscreen Breatherboard**. Fasteners should be long enough to penetrate through furring into studs as required by Building codes.
4. Apply the scratch coat of stucco using a slightly reduced trowel pressure to avoid deflection of the backing sheet. Allow the scratch coat to fully cure, (minimum 72 hours) then subsequent coats can be applied in the normal manner. "Double-back" stucco application is not recommended over a non-rigid backing as per published industry guidelines. Fibre-containing stucco mix is recommended at all times.
5. Follow all rules of the building code for jurisdictions where used. Stucco cracks are an accepted characteristic of stucco. Hal Industries provides no assurance against stucco cracks since field conditions are beyond our control. Dark coloured stucco is more likely to crack especially on steel supports. Reduce panel sizes for dark stucco to minimize cracking potential. Use thru-wall flashing at each floor level or max. 9' height.

*The information presented herein, while not guaranteed, is to the best of our knowledge true and accurate. Except when agreed to in writing for specific conditions of use, no warranty or guarantee expressed or implied is made regarding the performance of any product, since the manner of use and handling are beyond our control. The user of such information assumes all risk connected with the use thereof. Nothing contained herein is to be construed as permission or as a recommendation to infringe any patent.*