

HAL-TEX "COR-PLY"

2-PLY

CORRUGATED BUILDING PAPER "THE NEW STANDARD FOR WALLS"

DESCRIPTION

A two-ply breather-type asphalt kraft Building Paper which has *one corrugated ply* laminated to one smooth ply. This product is intended for use on building walls beneath the external finish as *a self-draining* building envelope material. The corrugated-ply provides *vertical channels* for a capillary break and a secondary drainage plane for incidental moisture. Listed under CCMC Listing # 11479-L for building paper used as sheathing membranes. COR-PLY is intended for use in regions where a full rainscreen cavity (10 mm) is not a code requirement, but where better moisture protection for walls is desired.

USES AND BENEFITS

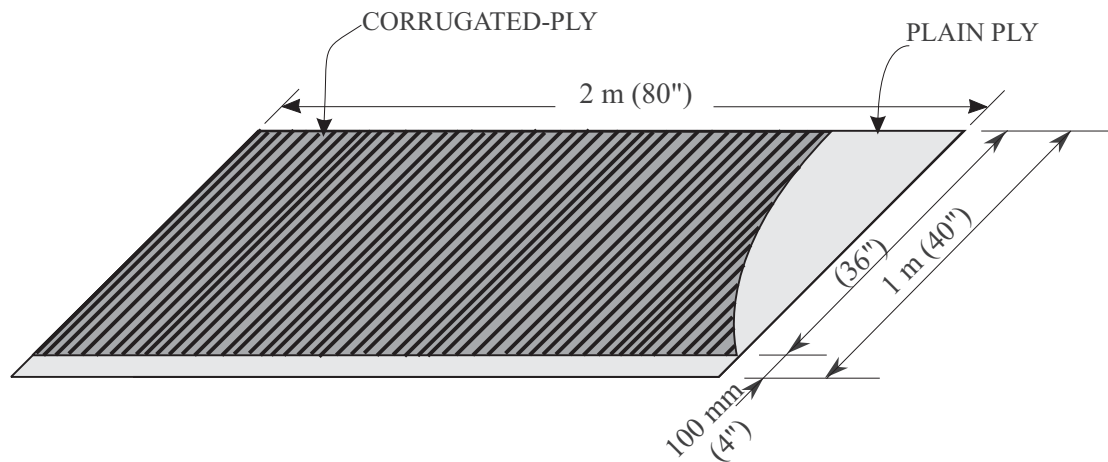
Intended for use on walls beneath stucco, stone or other types of wall finish where a separating air gap is desired between the structural wall surface and the external finish. COR-PLY combines three very effective ways to keep a wall dry:

1. **PHYSICAL SEPARATION** of the outer wall finish from the wall sheathing to reduce moisture ingress by capillary action or wicking.
2. **DRAINAGE PATHWAYS** for improved downward flow of any moisture which may bypass the outer wall finish through incidental points of entry, and
3. **EASIER VAPOUR RELEASE** from behind the wall cladding via channels vented to the atmosphere.

TECHNICAL DATA

Width:	1 m (40") nom., 36" coverage.
Thickness:	3.5 mm nom.
Sheet Size & Coverage:	1m x 2 m nom. coverage/sheet = 36" x 80" (20 ft ²) - 100 sheets/ box & 1m x 10 m nom. coverage/roll = 36" x 32.5' (100 ft ²) - 18 rolls/ box
Water Vapour Permeance:	> 3.0 metric perms 264 ng/pa.sec m ² (ASTM E96)
Compliance:	CAN 2-51.32 M77, CCMC Listing # 11479-L

FIGURE 1
COR-PLY



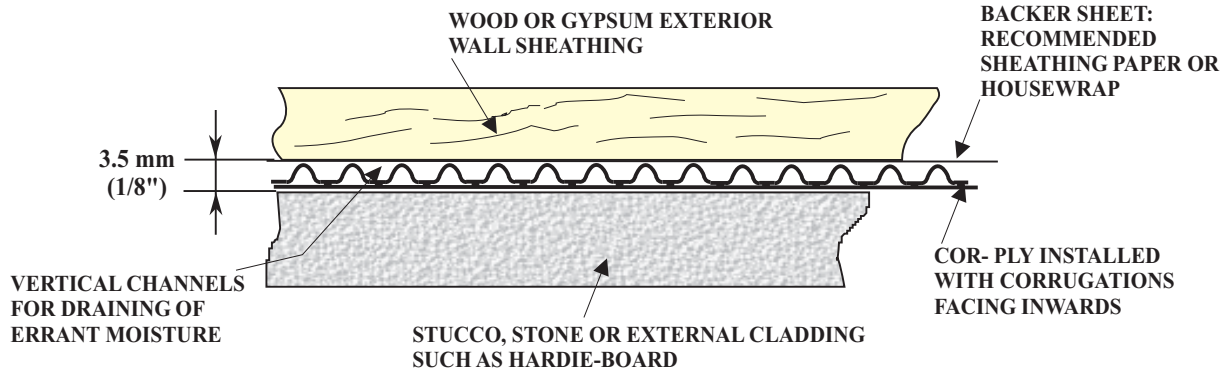
Page 1 of 2
Rev. July 26, 2010

HAL-TEX "COR-PLY"

"THE NEW STANDARD FOR WALLS"

page 2 of 2

Figure 2 FOR USE UNDER STUCCO, STONE FACING OR CLAD WALLS
COR-PLY cross section shown full size in wall assembly



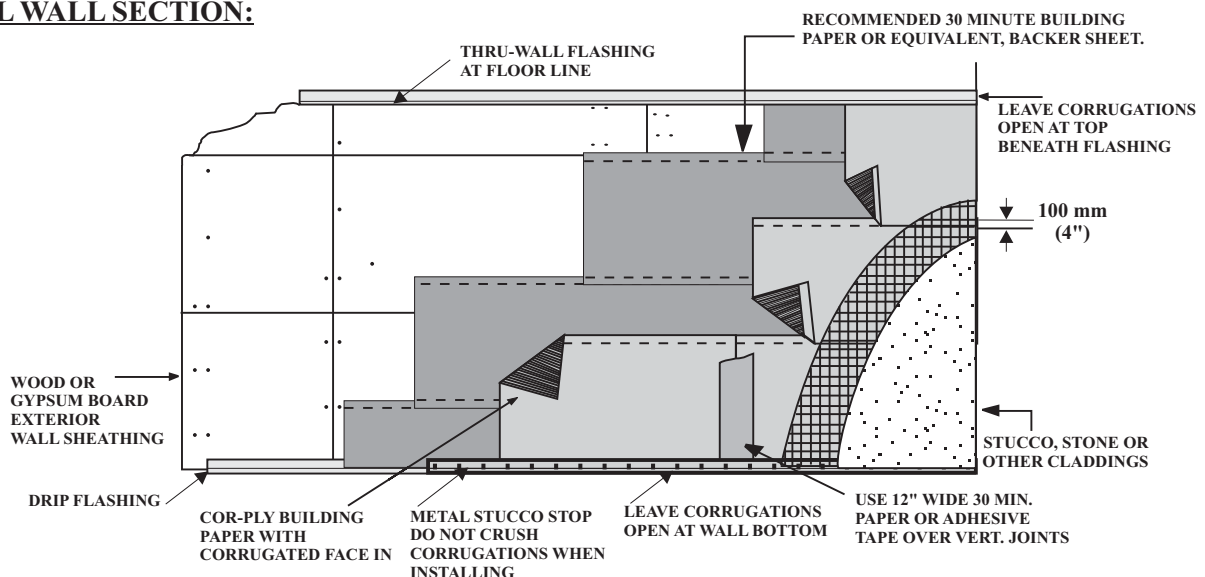
INSTALLATION GUIDE FOR STUCCO WALLS OR OTHER FACINGS:

Install COR-PLY with the corrugated side facing inwards and the plain side facing out. A single-ply or double-ply backer sheet is recommended. Use a hand stapler or a hammer stapler for the COR-PLY. Position the sheets so that the horizontal laps are shingle-style as shown on the diagram. Use a 12" cover strip of 30 minute building paper or self-adhesive tape over vertical joints. Use self-adhesive tape to seal all tie-ins to windows and other terminations. Then install stucco-stops and stucco-wire lath in the normal way, *except do not hammer nails tightly down to avoid crushing the sheet.* Install stucco, stone or other facings in the usual manner. Ensure that corrugations are open to air at wall bottom and at each floor level & wall top. Use thru-wall flashings at each floor elevation for drainage and venting. For stucco walls furr-out window frames 1/8" (3 mm) to maintain full stucco thickness.

Figure 3 SUGGESTED METHOD OF USE

May be varied to suit job requirements. Seek advise from a qualified building envelope professional for more complicated projects. Follow appropriate building code for jurisdiction of use. Not intended as a substitute for full 10 mm rainscreen cavity where required by code.

TYPICAL WALL SECTION:



The information presented herein, while not guaranteed, is to the best of our knowledge true and accurate. Except when agreed to in writing for specific conditions of use, no warranty or guarantee expressed or implied is made regarding the performance of any product, since the manner of use and handling are beyond our control. The user of such information assumes all risk connected with the use thereof. Nothing contained herein is to be construed as permission or as a recommendation to infringe any patent.